

# TRANSISTOR MODULE (Hi-β)

# SQD400BA60

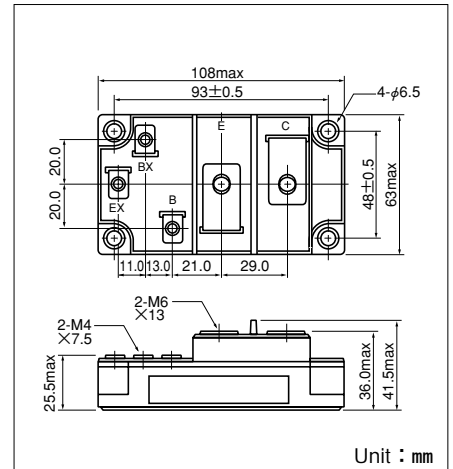
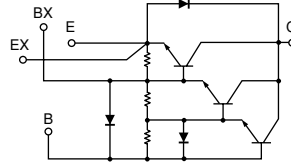
UL;E76102(M)

SQD400BA60 is a Darlington power transistor module with a **ULTRA HIGH**  $h_{FE}$ , high speed, high power Darlington transistor. The transistor has a reverse paralleled fast recovery diode ( $t_{rr}$  : 200ns). The mounting base of the module is electrically isolated from semiconductor elements for simple heatsink construction,

- $I_C=400A$ ,  $V_{CEX}=600V$
- Low saturation voltage for higher efficiency.
- ULTRA HIGH DC current gain  $h_{FE}$ .  $h_{FE} \geq 750$
- Isolated mounting base
- $V_{EBO}$  10V for faster switching speed.

### (Applications)

Motor Control (VVVF), AC/DC Servo,  
UPS, Switching  
Power Supply, Ultrasonic Application



### Maximum Ratings

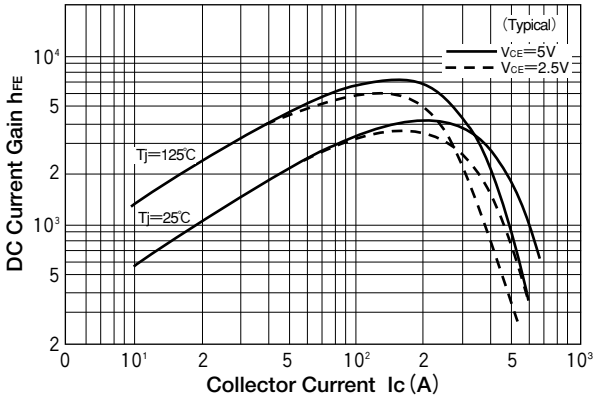
( $T_j=25^\circ C$  unless otherwise specified)

Symbol	Item	Conditions	Ratings		Unit
			SQD400BA60		
$V_{CBO}$	Collector-Base Voltage		600		V
$V_{CEX}$	Collector-Emitter Voltage	$V_{BE}=-2V$	600		V
$V_{EBO}$	Emitter-Base Voltage		10		V
$I_C$	Collector Current	( ) = $p_w \leq 1ms$	400 (800)		A
$-I_C$	Reverse Collector Current		400		A
$I_B$	Base Current		24		A
$P_T$	Total power dissipation	$T_c=25^\circ C$	1500		W
$T_j$	Junction Temperature		-40 to +150		$^\circ C$
$T_{stg}$	Storage Temperature		-40 to +125		$^\circ C$
$V_{iso}$	Isolation Voltage	A.C.1minute	2500		V
	Mounting Torque	Mounting (M6)	Recommended Value 43kgf·cm		N·m (kgf·cm)
		Terminal (M6)	Recommended Value 43kgf·cm		
		Terminal (M4)	Recommended Value 12.5kgf·cm		
	Mass	Typical Value	460		g

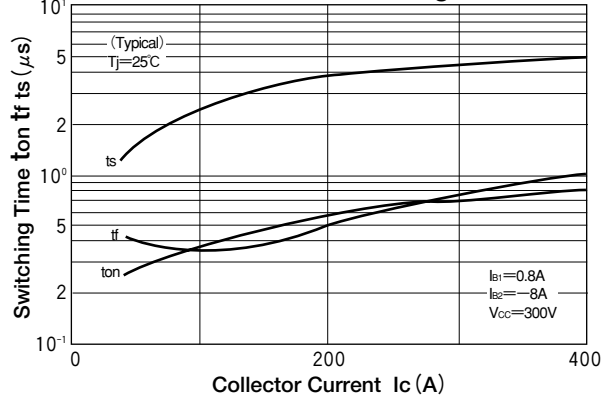
### Electrical Characteristics

Symbol	Item	Conditions	Ratings			Unit
			Min.	Typ.	Max.	
$I_{CBO}$	Collector Cut-off Current	$V_{CB}=V_{CBO}$			4.0	mA
$I_{EBO}$	Emitter Cut-off Current	$V_{EB}=V_{EBO}$			1600	mA
$V_{CEO(SUS)}$	Collector Emitter Sustaining Voltage	$I_C=1A$	450			V
$V_{CEX(SUS)}$		$I_C=80A, I_{B2}=-8A$	600			
$h_{FE}$	DC Current Gain	$I_C=400A, V_{CE}=2.5V$	750			
$V_{CE(sat)}$	Collector-Emitter Saturation Voltage	$I_C=400A, I_B=530mA$			2.5	V
$V_{BE(sat)}$	Base-Emitter Saturation Voltage	$I_C=400A, I_B=530mA$			3.0	V
$t_{on}$	Switching Time	On Time			2.0	$\mu s$
$t_s$		Storage Time	$V_{CC}=300V, I_C=400A$		8.0	
$t_f$		Fall Time	$I_{B1}=0.8A, I_{B2}=-8A$		2.0	
$V_{ECO}$	Collector-Emitter Reverse Voltage	$-I_C=400A$			1.8	V
$t_{rr}$	Reverse Recovery time	$V_{CC}=300V, I_C=-400A, -di/dt=300A/\mu s, V_{BE}=-5V$		200		ns
$R_{th(j-c)}$	Thermal Impedance (junction to case)	Transistor part			0.083	$^\circ C/W$
		Diode part			0.25	

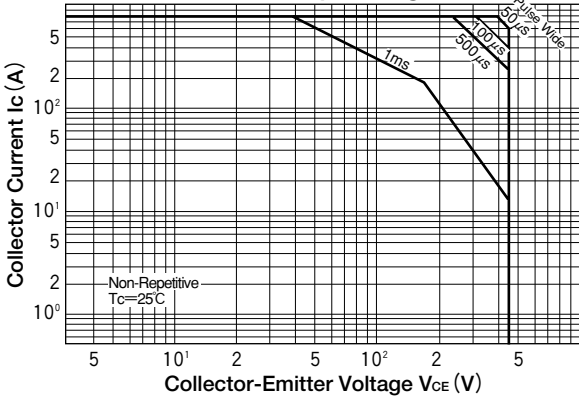
### D.C. Current Gain



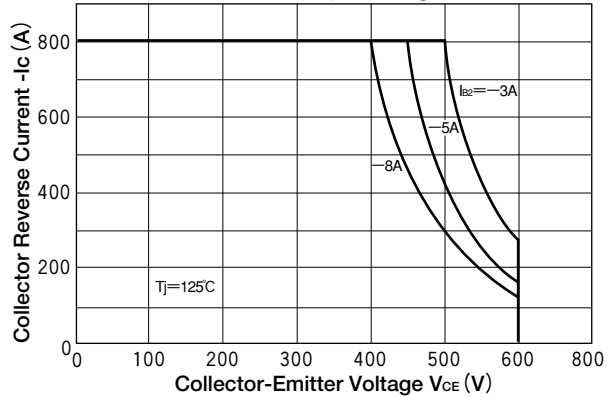
### Collector Current Vs Switching Time



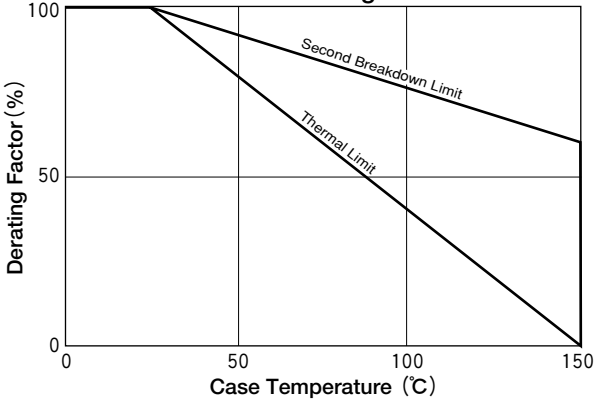
### Forward Bias Safe Operating Area



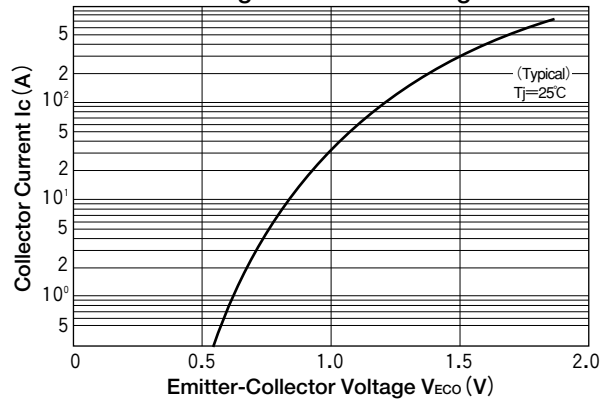
### Reverse Bias Safe Operating Area



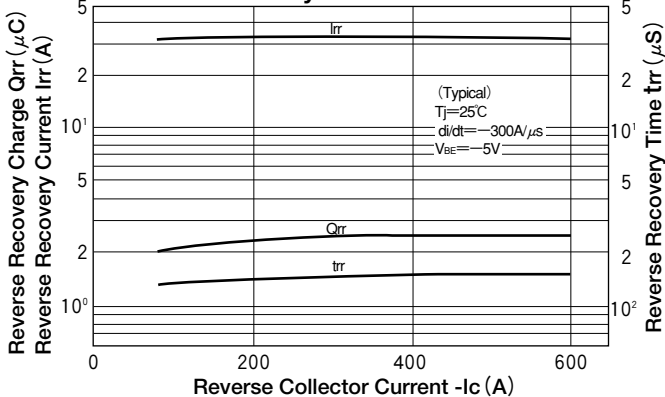
### Collector Current Derating Factor



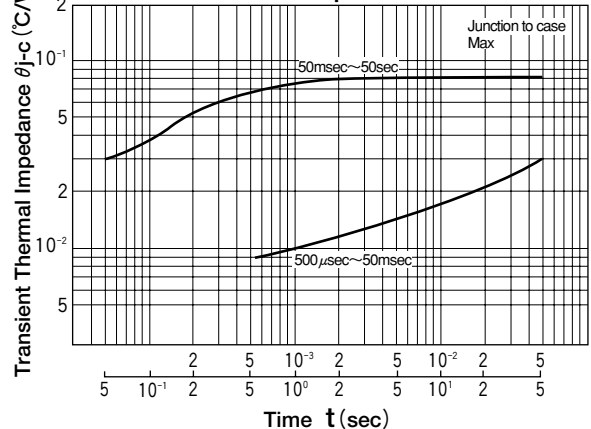
### Forward Voltage of Free Wheeling Diode



### Reverse Recovery Characteristics



### Transient Thermal Impedance



This datasheet has been download from:

[www.datasheetcatalog.com](http://www.datasheetcatalog.com)

Datasheets for electronics components.